

# IMMERGIS



[www.immergis.eu](http://www.immergis.eu)



## SERVICES FOR LINEAR INFRASTRUCTURES MANAGERS

### GLOBAL NETWORK MANAGEMENT

From field data collection, comprehensive data analysis, to works & maintenance programmes definition and assets management solution implementation.

#### 1 DATA COLLECTION

#### 2 DATA ANALYSIS

#### 3 NETWORK MANAGEMENT

#### 4 CONSULTING



1

## Network survey

Immergis collects network's geographic information by conducting large-scale and high-speed surveys:

- imajbox®: geo-referenced and oriented high resolution images
- LRMS and unibox®: UNI and IRI measures.



## Databases creation

Immergis creates databases in the requested format from the collected information:

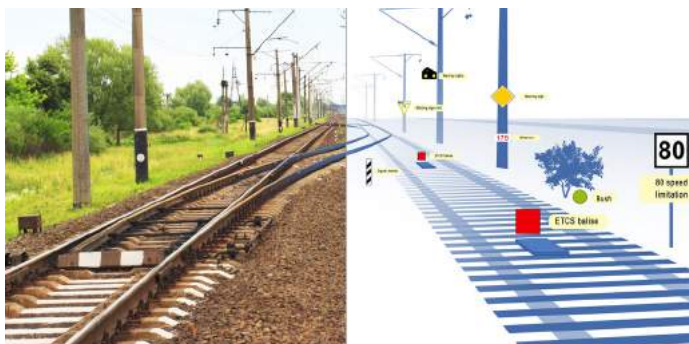
- GIS databases
- images databases
- road databases.

2

## Assets inventory

Immergis inventories all network's assets and defines attributes according to requirements:

- signs, lighting, safety equipment, roads and shoulders, etc.



## Condition assessment

Immergis offers several methodologies to provide a complete network's and assets condition assessment, combining:

- a visual assessment
- road geometry characterisation
- UNI measures.

3

## Works programme

Inventories, analysis, assessments and reports enable Immergis to define:

- works programmes (functional, investment)
- reconditioning and maintenance costs evaluation.

## Collaborative Web GIS Platform

Immergis Web allows network's and assets management in multi-modes:

- Schematic
- 2D (map)
- 3D (immersion in field's images).



4

## Consultancy services – Expertise

Immergis supports infrastructures managers:

- existing process audit and requirements identification
- feasibility studies
- support on roads-management competency transfer

## Experts provision

Immergis makes available to its customers experts in survey, GIS database management, road, rail, etc.

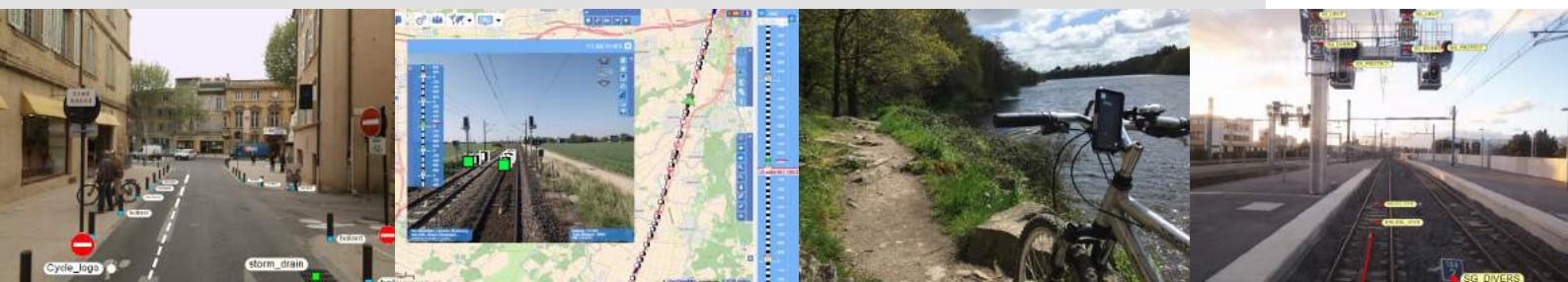
## GIS training

Immergis offers trainings on GIS softwares (ArcGIS, QGIS, MapInfo, etc.).





- More than **45 000 km** surveyed, inventoried or analysed
- A **15-human-sized** experts team
- Intervention on all **networks types**: road, rail, bike trails, paths, trails, waterways, etc.
- More than **60 references** in France and abroad
- Double-skills: **road expertise and GIS know-how**
- Adaptation to existing management processes and integration of existing data
- **Flexibility and availability** on all domestic and international territories



## Immergis

La Valsière - 44 rue Antoine Jérôme Balard  
34790 - Grabels - FRANCE

Tel : +33(0)4.34.11.65.51 Fax: +33 (0)9 74 44 66 21

[info@immergis.eu](mailto:info@immergis.eu) [www.immergis.eu](http://www.immergis.eu)

**CONTACT US!**

## PARTNERS & REFERENCES

