



IMMERGIS WEB

Collaborative Web GIS Platform for a global rail assets management

Easy to deploy

Comprehensive

Intuitive

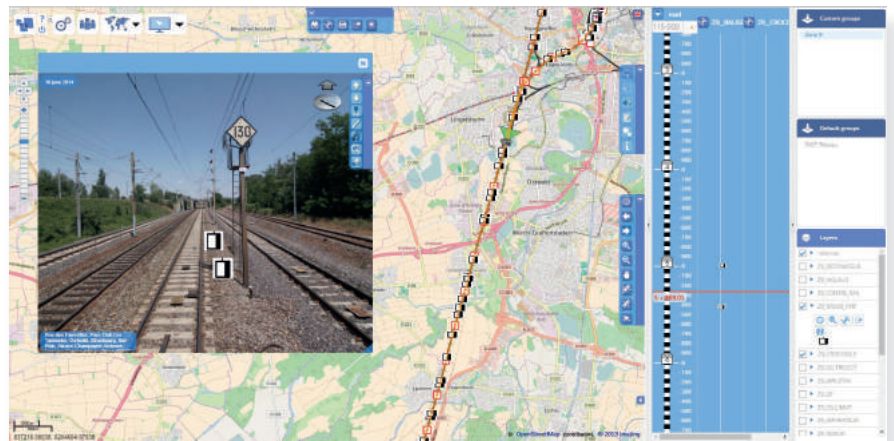
Mobile

OVERVIEW

Immergis Web is a collaborative Web GIS platform to manage and monitor rail assets and equipment in real field environment.

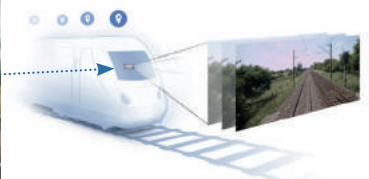
It is an all-integrated application allowing rail network infrastructures managers to:

- Produce GIS data
- Manage and monitor GIS data processing
- Share rail information
- Decide rail projects priorities.



Bring reality to your data

- Integrated 3D geo-localised immersive viewing
- GIS data projections in images
- Imajbox® surveys (high resolution, multi-views, panoramic, Lat/Long, X/Y, etc.).

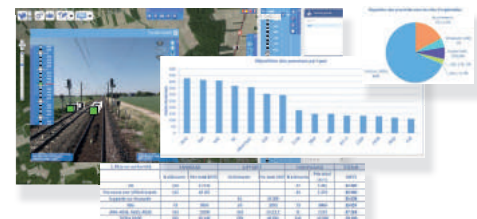


Share GIS data and rail assets information

- **Specific workspaces settings:** define end-users' access permission according to their different rules, projects status and territorial organisations.
- **Collaborative geo-data processing:** facilitate several end-users' data processing with a workflow manager.

Manage and monitor rail works

Dashboards and reports are provided for an effective decision-making for maintenance, budgeting and rail work scheduling.



ADVANCED FUNCTIONALITIES

Immergis Web, a **user-friendly interface**:

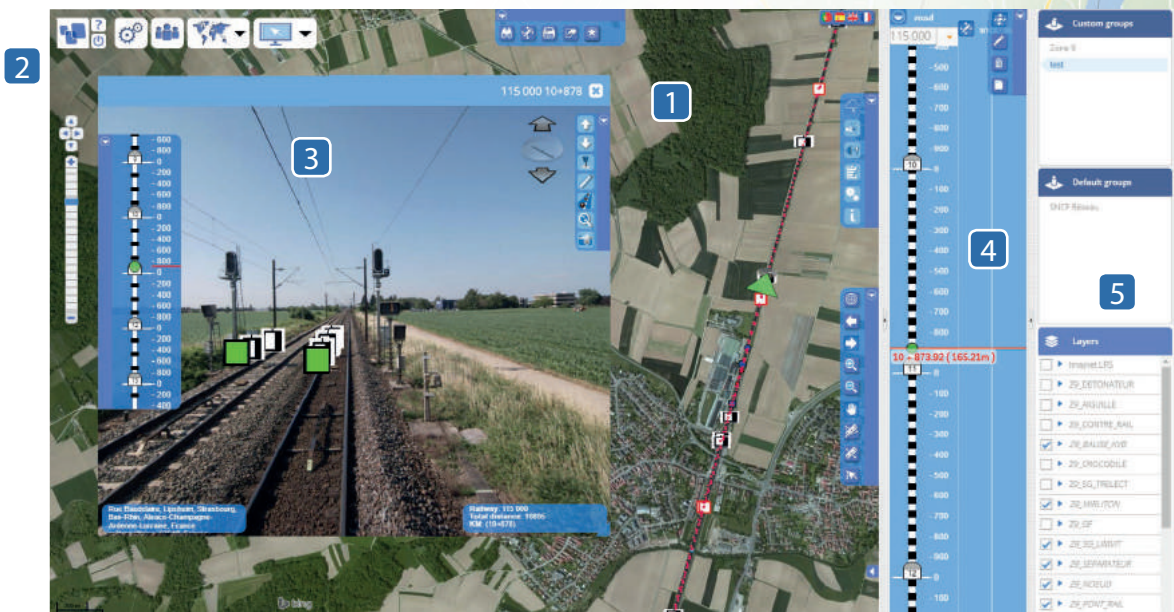
- Simplified and multidimensional viewing:
 - ✓ 1D synoptic view for a clear and linear vision to easily access rail assets overview
 - ✓ 2D mapping for a fast localisation viewing
 - ✓ 3D image view to bring reality to your data.
- **Adaptable workspace** according to user profile, territory and required information level:
 - ✓ platform administration
 - ✓ data modification and processing
 - ✓ data viewing
 - ✓ user profile for external users (i.e. subcontractors, public works company)
- Simple and advanced **data search tool** (multi-criteria, attributes, spatial, buffer, etc.)

- **Workflow checking system**, to guarantee efficiency in rail works management
- **Timeline** for modified data monitoring.

Immergis Web integrates your existing rail GIS data.

Synoptic benefits

- Simplified and synthetic vision of rail assets
- Several viewing modes: horizontal and schematic, by rail name, milestone, abscissa relative, with offset value, etc.
- **Information dynamic presentation**: access easily to any GIS data and modify directly its position and attributes (real-time synchronisation and vectorial representation).



1 2D mapping 2 Modules access & settings 3 Image module with 3D environment 4 Synoptic: linear view 5 GIS layer control panel

EXTENSIONS

Mobile application

The Immergis Tab application is designed for a **portable and easy use of the platform**, on Android devices. It allows to display and update the rail database and rail works monitoring.

Immergis Tab provides users with:

- Online/offline mode: 4G/WIFI or cache storage
- Data collection by GPS or by stilet pen
- Image capture with attachment.



Complementary modules

- Rail and construction works monitoring & follow-up
- Rail works scheduling (planning + estimation)
- On demand specific application modules

SUBSCRIPTION

- 5 users licence packages
 - ✓ Status and access definition allowed (admin, contributor, reader)
- 3 levels: basic, standard, advanced
- Full-web application: in SaaS mode or installed onsite

Demo web platform: demo.immergis.fr (login & password on request)

