

IMMERGIS



www.immergis.net

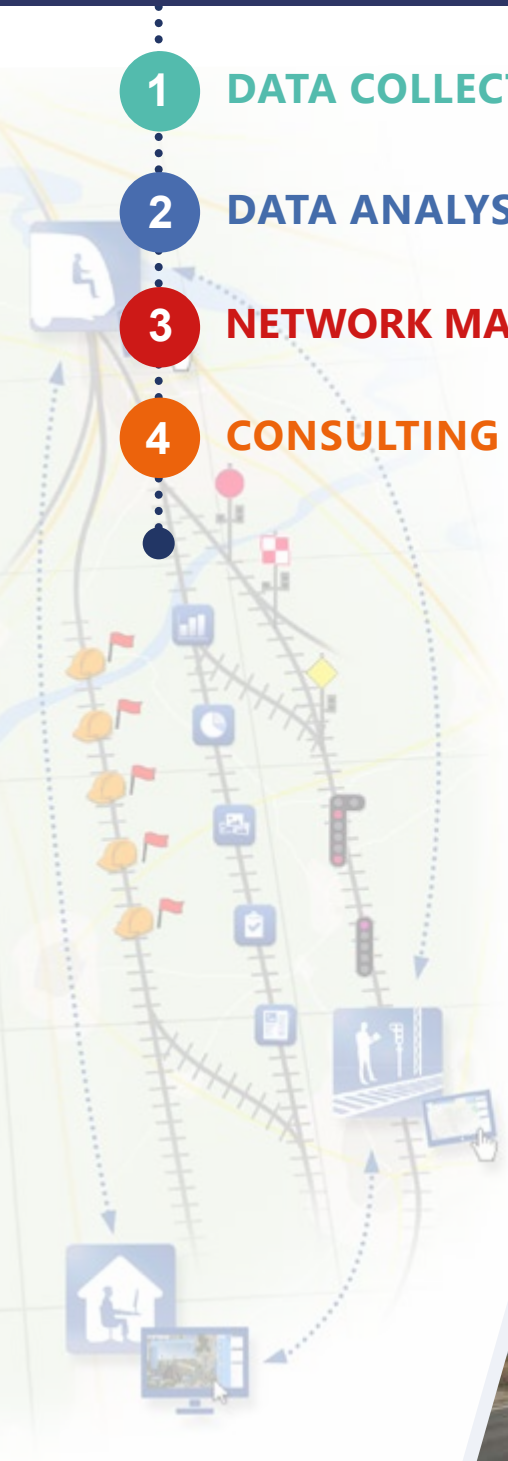
SERVICES FOR LINEAR INFRASTRUCTURES MANAGERS

GLOBAL NETWORK MANAGEMENT

From field data collection, comprehensive data analysis, to works & maintenance programmes definition and assets management solution implementation.



- 1 DATA COLLECTION
- 2 DATA ANALYSIS
- 3 NETWORK MANAGEMENT
- 4 CONSULTING

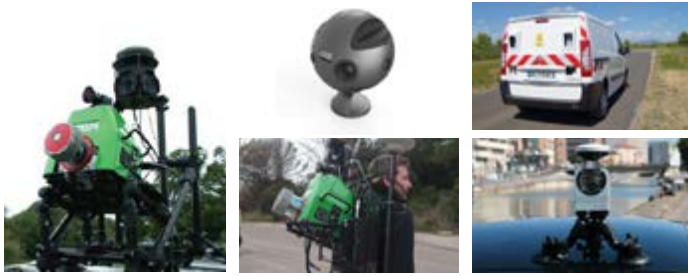


1

Network survey

Immergis collects network's geographic information by conducting large-scale and high-speed surveys:

- georeferenced (90° to 360°) and high resolution images (> 12K)
- 3D laser data (LiDAR, 2cm (X,Y,Z))
- UNI and IRI measures (LRMS and Unibox®).



Databases creation

Immergis creates databases in the requested format from the collected information:

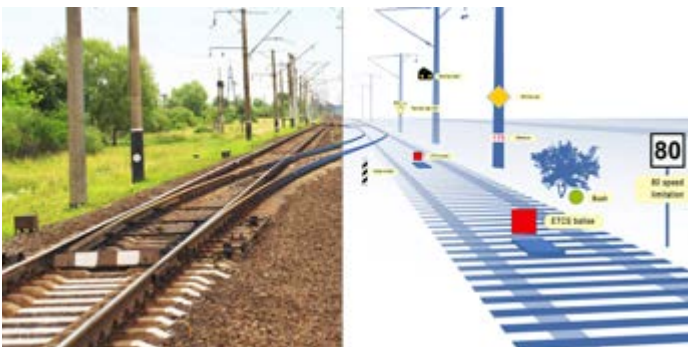
- GIS databases
- images databases
- road databases
- 3D modelisation (BIM, Smart City)
- Mapping and thematic cartography

2

Assets inventory

Immergis inventories all network's assets and defines attributes according to requirements:

- signs, lighting, safety equipment, roads and shoulders, etc.



Condition assessment

Immergis offers several methodologies to provide a complete network's and assets condition assessment, combining:

- a visual assessment
- road geometry characterisation
- UNI measures.

3

Works scheduling

Inventories, analysis, assessments and reports enable Immergis to define:

- works scheduling (functional, investment)
- reconditioning and maintenance costs evaluation.

Asset Management System

Immergis proposes a set of collaborative tools for global network asset management:

- Road Asset Management System (RAMS)
- Pavement Management System (PMS)
- Linear Infrastructure Asset Management System (LIAMS)



4

Consultancy services – Expertise

Immergis supports infrastructures managers:

- existing process audit and requirements identification
- feasibility studies
- support on roads-management competency transfer

Experts provision

Immergis makes available to its customers experts in survey, GIS database management, road, rail, etc.

GIS training

Immergis offers trainings on GIS softwares (ArcGIS, QGIS, MapInfo, etc.).



- More than **60 000 km** surveyed, inventoried or analysed
- A **35-human-sized** experts team
- Intervention on all **networks types**: road, rail, bike trails, paths, trails, waterways, etc.
- More than **100 references** in France and abroad
- Double-skills: **road expertise and GIS know-how**
- Adaptation to existing management processes and integration of existing data
- **Flexibility and availability** on all domestic and international territories



Immergis
 La Valsière - 44 rue Antoine Jérôme Balard
 34790 - Grabels - FRANCE
 Tel : +33(0)4 34 11 65 51 Fax: +33 (0)9 74 44 66 21
info@immergis.fr www.immergis.net



PARTNERS & REFERENCES

